

Friends of Chandor Gardens  
presents



**Saturday, June 3, 2023 | 10 am - 4 pm**

*Enjoy a self-guided journey through five unique gardens  
in Parker County.*

*Discover what lies behind the hedges, fences, and gates!*



*Chandor Gardens  
Foundation, Inc.*

**Tickets: \$12 online (in advance) at [www.chandorgardensfoundation.org](http://www.chandorgardensfoundation.org)  
or \$15 at garden gates the day of the event**

---

# Welcome

---

Dear Guest,

Welcome to the 2nd Annual Secret Gardens of Parker County Tour.

The Friends of Chandor Gardens, part of Chandor Gardens Foundation Inc.\*, are thrilled to present this year's tour of five unique gardens in Parker County, Texas. These gardens showcase stunning views, garden art, broad range of plants for Texas gardens, and creative landscaping ideas. Have fun discovering what lies behind the hedges, fences, and gates!

The gardens can be visited in any order between the times of 10:00 am and 4:00 pm. Make your own itinerary, go at your own pace, and enjoy your time in these beautiful gardens.

We wish to extend a huge thank you to the gracious garden owners who have opened their gardens to us.

We wish to thank our volunteers and sponsors, without whose support we would not be able to have this wonderful event.

Lastly, thank you, valued guest, for your support of this event. Proceeds benefit the enhancement of Chandor Gardens reflecting the artistic vision of Douglas Chandor.

Sincerely,

Committee Members, 2nd Annual Secret Gardens of Parker County Tour

Karen Kennedy - Chairperson

Beth Batista

Darlene Chapman

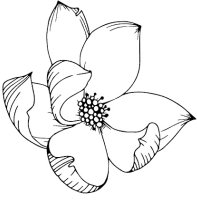
Eileen Leslie

Ann Geer

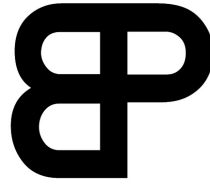


\* Chandor Gardens Foundation Inc. is a 501 (c)(3) organization.

Thank You to Our Tour Sponsors



Magnolia Level  
Sponsor



CACTUS JACK RANCH  
- EST. 1970 -



Rose Level  
Sponsors

**KAREN KENNEDY**

LICENSED TX INSURANCE AGENT

**MEDICARE**  
INSURANCE ★ SOLUTIONS



Lily Level  
Sponsor



CENTURY 21 Judge Fite Company

JAMIE BODIFORD



Daisy Level  
Sponsors

Robert and Theresa Anderson

Larry and Carlene Eubank

---

*220 Terrace Bluff Lane, Aledo*

---



When we bought our home in 2005, the lot came with a few live oak trees, elm trees and a builder's landscape inside the walkway and the front of the house. It also came with what we learned was caliche soil. Since we had lived in Japan we wanted a Japanese aesthetic style. We became familiar with John Powell and David Bergman of Weatherford Gardens at the time.

What started as a flat landscape, our front yard was first layered with numerous truckloads of planting soil from which berms were crafted. This was followed by boulders, crepe myrtles, rocks, junipers, Eastern red cedars and eleagnus bushes. All of this was done to create a Japanese style landscape that we remembered from our Navy days in Japan. Although there have been alterations, growth and new plantings,



including Japanese red maples and hydrangeas, our front yard has remained a soothing site as you drive up to the home. You be the judge when you arrive.

When it came time to do our backyard the following year, we installed our pool first. We sought the advice of John Powell as to the shape of the pool based on our landscape design. Once that was completed in 2006, landscaping and the sprinkler installation proceeded. The focal point to this day is the doubletrunk live oak that was in the middle of the backyard as seen here.



We stayed with the Japanese design style. More soil was brought in, and boulders were delivered and placed (some to symbolize mountains). A Zen rock garden was installed in front of our casual dining windows that we rake into flowing ripples of water. It includes dwarf yaupons and some large rocks. The landscape was completed with additional live oaks, crepe myrtles, eleagnus, red mountain cedars and maiden hair grasses. Flowers that now bloom during the course of the Spring, Summer and Fall include double-bearded iris, cactus, red and white yuccas, daffodils, amaryllis, gladiolus and dahlias.

We have enjoyed living in Parker since our move from Fort Worth and relish the peaceful surroundings of our Japanese landscaping.

John and Mary  
Ripperton



## 1113 Thistle Hill Trail, Weatherford



The inspiration for my garden came from visiting cottage gardens in England. A cottage garden is typically bursting with color and doesn't conform to a specific style.

My garden is small, casually informal with lots of colorful perennials and herbs. My favorite tree is the Japanese maple, and I have managed to plant six of the smaller varieties throughout my garden, including my favorite, Weeping Japanese Maple. Natchez and red varieties of Crepe Myrtles line the fence to offer shade for hostas and ferns.

I have created two sitting areas so I can enjoy my garden from different views and different times of the day and night.

Look for different floral varieties of Calla, Coneflower, Coreopsis, Day Lily, Daisy, Fern, Gladiolus, Hosta, Hydrangea, Iris, Lamb's Ear, Lavender, Lily, Phlox, Rudbeckia, Salvia, Purple Shamrock, Purple Sweet Potato Vine, Yarrow, and some I have forgotten what they are. Herbs include Basil, Oregano, Rosemary and Chives.





My garden is my favorite place Spring through Fall. There is always something there to make me smile, including the numerous whimsical frogs and other critters.

Karen Kennedy

---

## 1221 Forest Park Drive, Weatherford

---



Welcome! We would first like to say thank you for coming and helping support Chandor Gardens. This is a fun event for a worthy cause and we are excited to contribute our space and share it with other interested people.

When we moved to this property in 2014, it was a deep lot covered mostly with native oak trees transitioning to a large clear space at the back. We enjoy many aspects of being outside and saw potential for different experiences within this one space. Our eclectic vision would lead to an evolving landscape, continually being coaxed to meet different needs.

The front yard was muddy and disfigured from the ever-present deer in the neighborhood. It needed drainage work, lawn and plants replaced, and a more inviting presence from the street. We installed a dry stream bed



there in 2015. Several new small paths generated more access and a small social seating area in the shade followed. We introduced new plant species and went to great lengths to shelter them from the deer. This effort has had varying results and is an ongoing experiment. We also lost several oak trees and were forced to replace them with smaller specimens. This gave us the opportunity to add variety by planting a Blaze Maple, Cedar Elm, and Shantung Maple.

The backyard was over shaded and prone to dramatic runoff flooding that left mostly mud under the dominate tree cover. This space seemed well served by a large central patio to eliminate the need for grass and take advantage of the cool shade. To define the space and provide texture and depth we planted many understory plants, significantly, hostas and ferns.

We have long loved to cook, especially using our own vegetables, fruits, and herbs. The back of the property and its abundant sunshine called out as an opportunity to plant raised garden beds and finally build a long desired greenhouse. These plans began to bear fruit starting in 2019. It will always be a work in progress but we have been able to enjoy tomatoes, various peppers, and lettuces. The greenhouse and adjacent compost bins have been instrumental in our results.

To enjoy a garden you must be able to get to it, and mobility issues necessitated a meandering network of paths and restful perches around the backyard. To this end we installed a meditation garden (which also fixed a persistent mud issue) and a bistro patio near the fruit trees.

It is natural for these spaces to evolve and we look forward to maintaining and tinkering with them moving forward. It brings a mixture of calm and excitement when we think of our tiny orchard maturing and being able to pick and share with people our increasing supply of fruits and vegetables.

This has not been an exhaustive list since our goal was to not exhaust you. We would be thrilled to answer particular questions if you have an interest in something. On that note our own resource for particular questions has been David Bergman of Weatherford Gardens. He has been fundamental to our successes and sense of satisfaction. He touched every part of this landscape and we cannot recommend him to you enough. Reach out to him as he is a patient and thoughtful encyclopedia of knowledge.

Thanks again for coming, and please enjoy yourselves!

*Brad and Cheryl Leech*

## 1919 Forest Glen Lane, Weatherford



Coming from the Arizona desert and with a homebuilder's eye, we saw the potential of this long-overlooked Woodland Hills lot as a verdant canvas for our new home. The 1200 yards of soil brought in to form the building pad for our house, designed to snugly nestle in the trees, created a slope originally planted in grass, but now features three tiered beds, masonry retaining walls, and flagstone stairs, walks, and our creek-side "treehouse" patio.

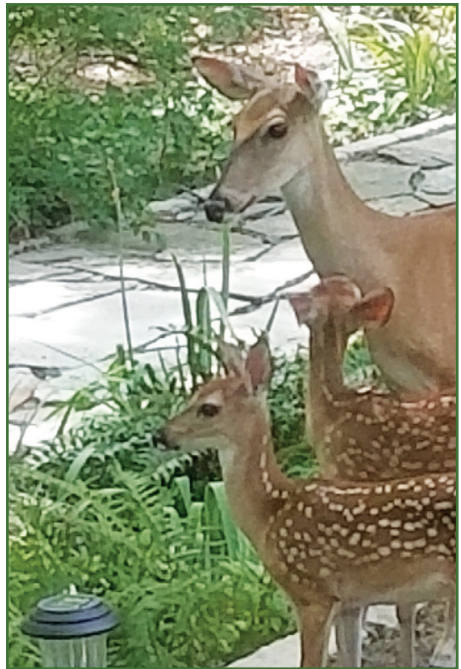


Begun in 1995, our garden continues to be a work in progress. The focal points of our 1.5 acre lot include the creek, the wildlife it supports, and more than 150 native trees, primarily post oaks, red oaks, and elms. It has been a journey to learn what plants are shade tolerant, deer resistant, and can withstand sub-freezing temperatures. Extensive upgrades to the flagstone walks, the “treehouse” patio, and retaining walls, as well as new lighting were completed in 2022.

Over 5,000 daffodil bulbs planted primarily along the creek delight the eye each February-March. A myriad of iris, impatiens (“deer candy” now only planted in our courtyard), pentas, pansies, violas, vinca, ajuga, and Lenten roses add splashes of color to their seasonal landscape. We are so blessed to be stewards of this beautiful spot. The “treehouse” is a most spiritual place regardless of the season. Enchanting views, serenading birds, wind chimes, dappled sunlight by day, raking light at sunset, and yes, the deer, make this a most special place – especially when accompanied by a cup of tea or a glass of wine. We hope you agree.

Grateful thanks to Extreme Exteriors and David Bergman who have done so much this past year to beautify our landscape.

Howard and Brenda  
McClurkin



711 W. Lee Avenue, Weatherford

## Chandor Gardens



Chandor Gardens, a unique 3.5 acre estate garden in the heart of Weatherford, Texas, is the brilliant vision of famed portrait artist Douglas Chandor (1897-1953). Few gardens in the world capture charm and grace on such a personal level with the ability to stir the spirit and sooth the soul. Fewer still are available for the public to explore.

Beginning in 1936 as an artist's dream, Douglas Chandor built the gardens from a cactus covered caliche hillside. He envisioned individual "garden rooms", connected by paths, with hedges and walls enclosing the gardens, and that's exactly what he created and named White Shadows. When questioned about his passion for gardening, Douglas would reply that he was given the talent to paint portraits in order to make the money needed to build his garden. This turned out to be a 16-year labour of love until his untimely death in 1953.

After Douglas' death, his wife Ina changed the name to Chandor Gardens as a tribute to Douglas, and kept it open to the public until her passing in 1978. For the next 16 years the gardens fell into a state of neglect. In 1994 Melody and Chuck Bradford purchased the property and lovingly restored the home and gardens. The City of Weatherford acquired Chandor Gardens in 2002.



Chandor Gardens captures both the elegance of a formal English garden and the ornate design of ancient Chinese architecture and ornamentation. The Boxwood Garden, the Bowling Green, and the Pixie Pond bring to life English garden features. The Chinese bridge, the Stone of the Immortals, the Chi-Ling Fountain, the Buddha Niche, and the Moon Gate add the Chinese garden flavor.

Today the hardscape of paths, ponds, fountains, waterfalls, and grottoes remains essentially unchanged; the plantings reflect a far more diverse palette of species than was ever utilized by Douglas. This is partially due to a much larger and denser tree canopy than in Douglas' day, which has reduced the amount of sunlight within the garden, and partially due to the necessity to make the garden interesting and colorful year round.



Each season is distinctly different at Chandor Gardens, and each year brings different color schemes, so that garden guests always find something new and different to see. And while the plantings may change often, the spirit remains the same, a reverent testimony to the brilliant Englishman who came to Texas and built a garden.

Chandor Gardens stands today as a world renowned garden listed on the National Register of Historic Places.

## About Chandor Gardens Foundation



*Chandor Gardens*  
Foundation, Inc.

ART / CULTURE / COMMUNITY

Chandor Gardens Foundation, Inc. was formed in 2013 to preserve and protect the historic heritage of Chandor Gardens, and enhancing that heritage, in alliance with the City of Weatherford, through the development of the entire Chandor property in a manner consistent with Douglas Chandor's artistic vision, while making it a center for art, music, horticulture and more.

The Foundation's vision for the future includes developing the adjacent 13.5 acres. The development will comprise of a visitors center with gift shop, expanded parking, an event center for community events, visual and performing arts facilities, nature walking paths, and uniquely designed outdoor spaces. These additions will enhance our rapidly growing community, attract more visitors, capitalize on the history and the beauty Chandor Garden has to offer, and alleviate the burden that constant use places on the existing historic home and garden.

### Friends of Chandor Gardens

Members of the Friends work to preserve the heritage of Chandor Gardens. They train and provide docents, help with seasonal events at Chandor Gardens, and endeavor to engage the community by promoting events that bring speakers, artists, programs, and classes to Chandor Gardens. The Friends also take day trips to museum exhibitions, notable gardens, and more; bring in speakers, and have yearly social gatherings. It is a great opportunity to connect, make friends, and make a difference.



[www.chandorgardensfoundation.org](http://www.chandorgardensfoundation.org)

Visit us on FACEBOOK @ ChandorGardensFoundation

## Douglas Chandor the Artist

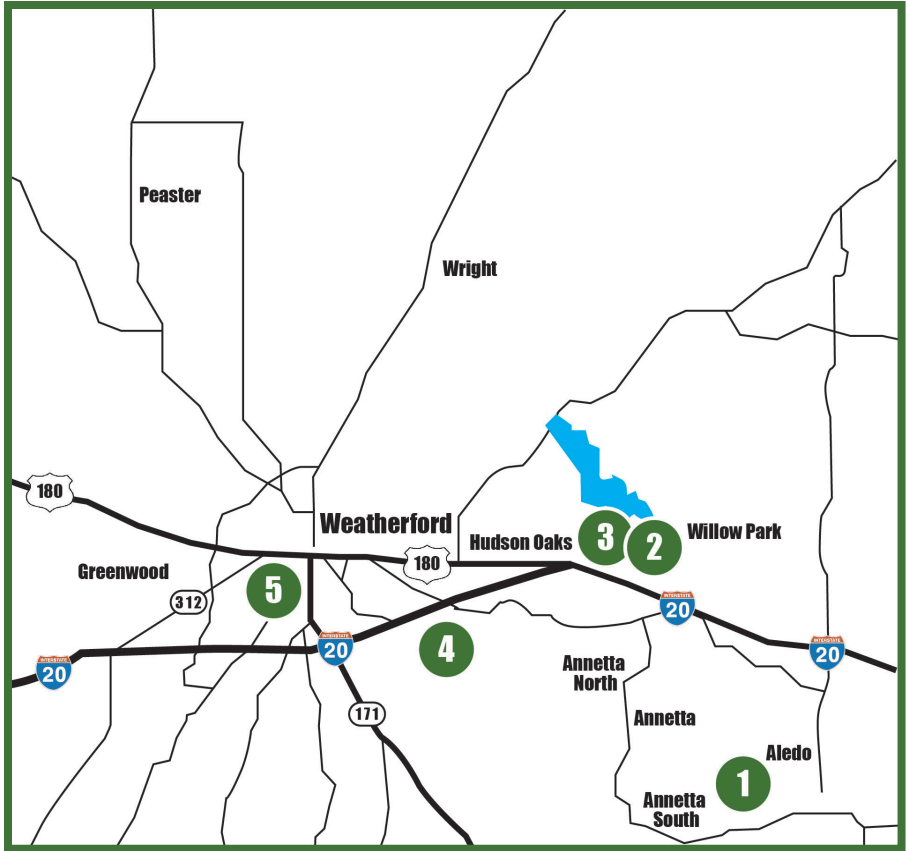
Douglas Granville Chandor was born in Surrey, England, on August 20, 1897. He married Ina Kuteman in 1934, and settled in her hometown of Weatherford, Texas. Douglas Chandor was one of the great portrait artists of the 20th Century. Five of his paintings are on display in the Smithsonian's National Portrait Gallery. His portrait of Eleanor Roosevelt is displayed in the White House, and his coronation portrait of Queen Elizabeth II, graces the British Embassy in Washington, DC. Douglas said that he painted so that he would have the money to garden.



Chandor Gardens Foundation Inc. 501 (c)(3)  
A Private Operating Foundation  
P.O. Box 114, Weatherford, Texas 76086

# Secret Gardens of Parker County Tour 2023

## Wayfinding Map



### Gardens

### Description Pages

❶	220 Terrace Bluff Lane, Aledo	4 - 5
❷	1113 Thistle Hill Trail, Weatherford	6 - 7
❸	1221 Forest Park Drive, Weatherford	8 - 9
❹	1919 Forest Glen Lane, Weatherford	10 - 11
❺	711 West Lee Avenue, Weatherford	12 - 13
	<i>Chandor Gardens</i>	

The gardens can be visited in any order between 10 am and 4 pm.